

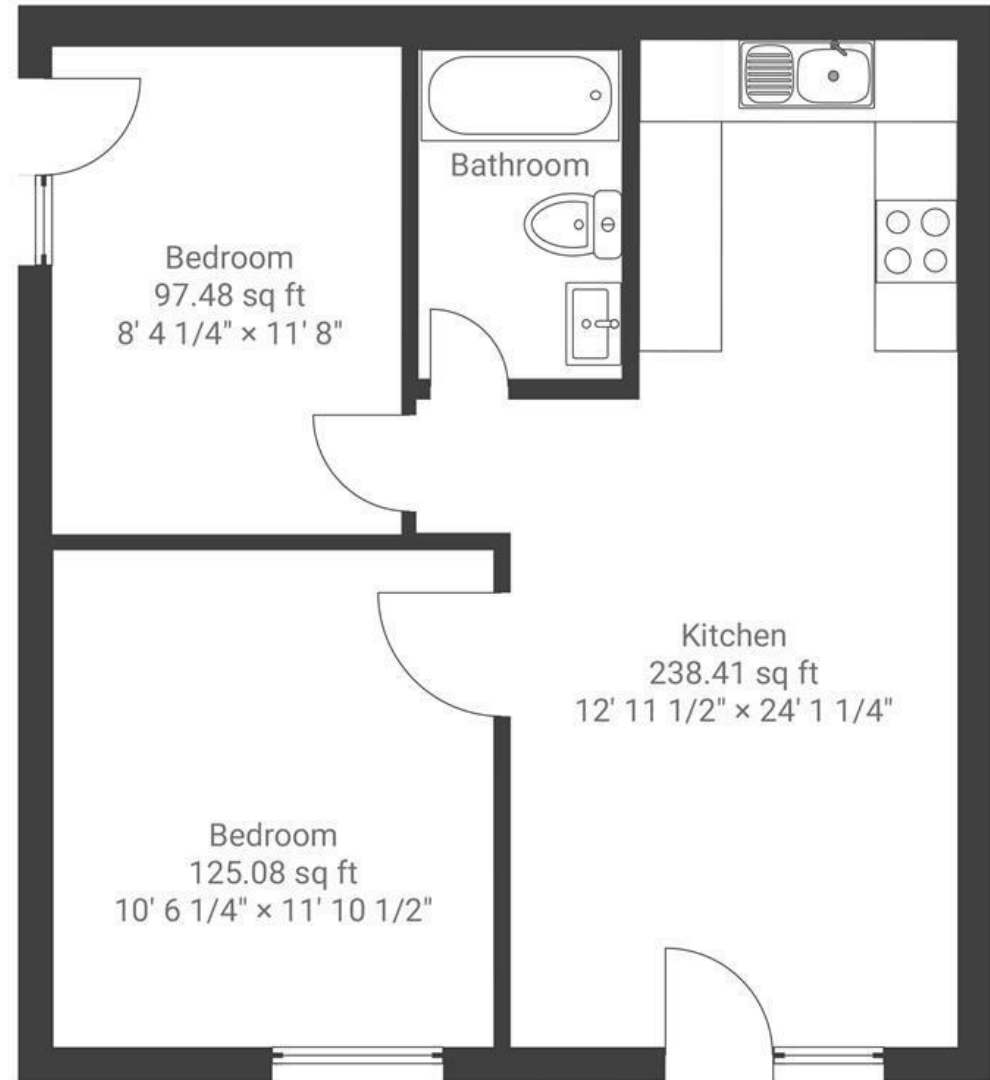
Niblets Hill

ST GEORGE

APPROXIMATE FLOOR AREA
46.4 SQM / 500 SQFT



GROUND FLOOR



~~Boardwalk~~

Niblets Hill

ST GEORGE, BRISTOL



£240,000



2 Bedrooms



BS5 8UH



1 Bathrooms

"The three flats have high quality finishes throughout. Each flat has two bedrooms, open plan kitchen/dining/lounge and a bathroom. All flats have an independent entrance and a dedicated off-road parking space. All flats have an external space in the form of a balcony with glass balustrades (the ground floor flat just has a porch area). It is a warm minimalist design of wood and black accessories. There is laminate floor in the kitchen/diner, ceramic tiles in the bathrooms and carpet in the bedrooms. The kitchen has a full size washer/dryer, dishwasher, cooker and fridge freezer. The bathroom has a shower over a bath with a glass door."

